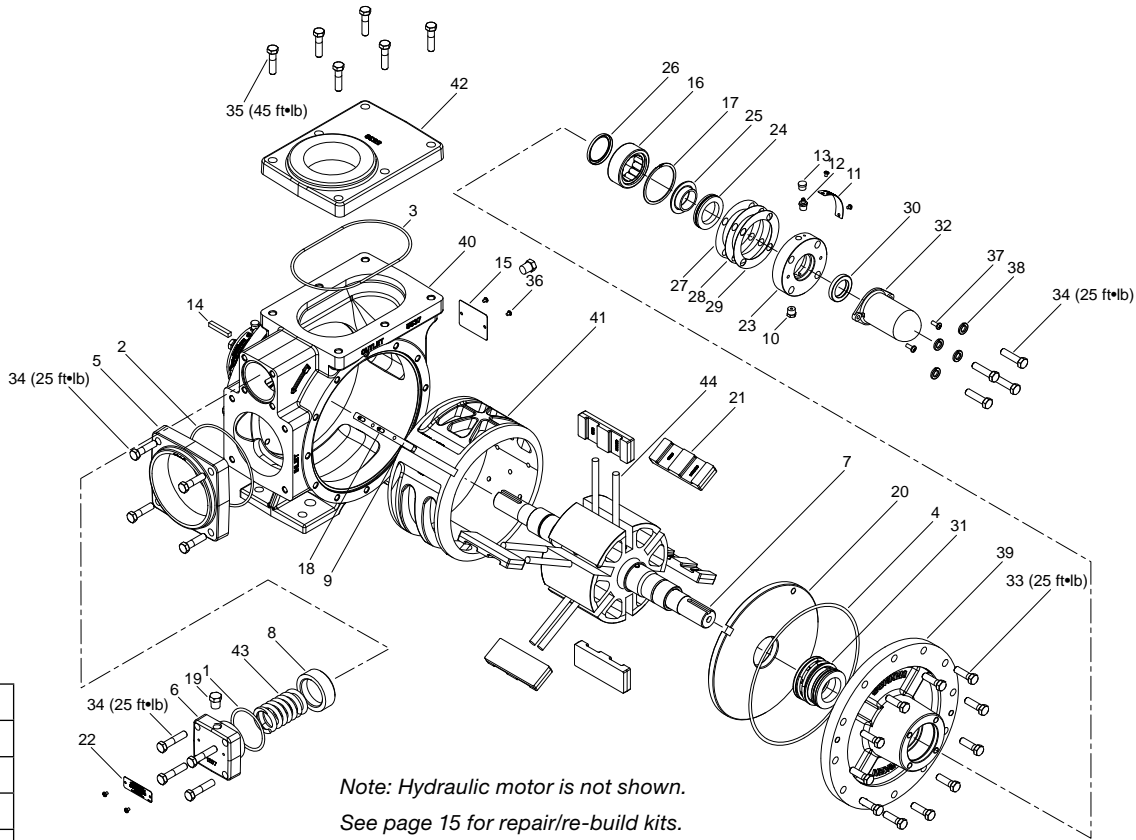


Appendix E—Parts Details for Models Z3500



| O-ring Code | |
|-------------|------------------------|
| A | Buna-N |
| B | Neoprene ^{®1} |
| D | Viton ^{®1} |
| E | Teflon ^{®1} |

Note: Hydraulic motor is not shown.
See page 15 for repair/re-build kits.

CAUTION: Always relieve pressure in the unit before attempting any repairs.

| Ref. No. | Part No. | Description | Qty |
|----------|-----------|--------------------------|-----|
| 1. | 2-228 | O-ring ² | 1 |
| 2. | 2-245 | O-ring ² | 1 |
| 3. | 2-259 | O-ring ² | 1 |
| 4. | 2-268 | O-ring ² | 2 |
| 5. | 1206-3 | Inlet flange—3" NPT | 1 |
| | 1206-4 | Inlet flange—4" NPT | 1 |
| | 1206-3S | Inlet flange—3" WF | 1 |
| | 1206-4S | Inlet flange—4" WF | 1 |
| 6. | 1207-2 | Relief valve cap | 1 |
| 7. | 1208-1X6R | Rotor shaft assembly | 1 |
| 8. | 1224 | Relief valve | 1 |
| 9. | 1309 | Cam key | 1 |
| 10. | 1343 | Grease relief fitting | 4 |
| 11. | 1359 | Lubrication plate | 2 |
| 12. | 2158 | Grease zerk | 2 |
| 13. | 2159 | Lubricap | 2 |
| 14. | 2270 | Shaft key—1/4" | 1 |
| 15. | 2649 | Nameplate | 1 |
| 16. | 2754 | Outer bearing | 2 |
| 17. | 2760-244 | Retainer ring | 2 |
| 18. | 3253 | Cam key pin | 2 |
| 19. | 3442 | Pipe plug—1/4" NPT | 2 |
| 20. | 3935 | Sideplate | 2 |
| 21. | 3936 | Vane ³ | 6 |
| 22. | 4248 | Relief valve warning tag | 1 |

| Ref. No. | Part No. | Description | Qty |
|----------|----------------|---------------------------------------|-----|
| 23. | 4417 | Bearing cap | 2 |
| 24. | 4432 | Thrust bearing assembly | 2 |
| 25. | 4435 | Thrust bearing mounting ring | 2 |
| 26. | 4438 | Grease seal / Oil seal | 2 |
| 27. | 4439 | Bearing cap shim—0.002" | 2 |
| 28. | 4439-1 | Bearing cap shim—0.010" | 2 |
| 29. | 4439-2 | Bearing cap shim—0.020" | 2 |
| 30. | 4441 | Grease seal | 2 |
| 31. | 4431-X2 | Mechanical seal assembly ² | 2 |
| 32. | 4985 | Coro-Vane shaft cover | 1 |
| 33. | 7001-037NC125A | Hex head bolt | 24 |
| 34. | 7001-037NC150A | Hex head bolt | 16 |
| 35. | 7001-043NC150A | Hex head bolt | 6 |
| 36. | 7012-006SF019E | Screw | 9 |
| 37. | 7012-010SF050E | Screw | 2 |
| 38. | 7206-037A | Lock washer—0.375" | 8 |
| 39. | 5534 | Head | 2 |
| 40. | 5537 | Case | 1 |
| 41. | 5539 | Cam | 1 |
| 42. | 5538 | Outlet flange—3" NPT Elongated | 1 |
| | 5538-3S | Outlet flange—3" WF Elongated | 1 |
| 43. | 5548 | Spring | 1 |
| 44. | 5554-X | Vane driver | 6 |

¹Registered trademarks of the DuPont company.

² _ denotes O-ring code. See chart above.

³Slots in vanes must face TOWARDS the direction of rotation