

INSTALLATION, OPERATION, AND SERVICING INSTRUCTIONS

KRUG MODEL G HAND PUMP

The Krug Pump is a precision engineered instrument . It does not require skilled mechanics to install; easy to operate, and in most cases, the servicing required can be done by the purchaser themselves.

However, for best results, and to add extra life to your pump, care should be exercised in both installing and servicing your pump. The simple rules outlined below will aid you in installing and servicing your Krug Hand Pump. It will also serve you in minor trouble-shooting. By experience with hundred of field tests on Krug pumps throughout the country, we have found that inmost failures the trouble is generally caused by failures of auxiliary equipment rather than in the pump itself. Therefore we want to emphasize that it is most important that you proper hose, fittings, and valves when you install your pump. It will save you time, trouble, work, and money in the end.

1. when installing the Krug Hand Pump, National Board of Fire Underwriters Pamphlet 58 should be followed.
2. A good, solid base or platform of concrete should be constructed on which the pump can be securely bolted. The top of the concrete base should be at ground level for maximum hand leverage.
3. A VAPOR RETURN LINE SHOULD BE INSTALLED IN ALL CASES WHERE THE KRUG PUMP IS USED FOR FILLING TRUCK AND TRACTOR TANKS. The vapor return line equalizes the pressure in the mobile take with the pressure of the storage tank. Engine heat, and very often during the summer months, outside temperature may cause a build up of pressure inside the mobile tank, and unless the pressure has been equalized, it would be impossible to fill the mobile tank. Upon opening the valve on the equalizing line after it has been installed, extreme care should be exercised as the excess flow check valve on the mobile tank outlet may snap shut. If this should happen, close the manual shut off valve momentarily until it is possible to hear the excess flow check valve snap open again. The open the shut-off valve very, very slowly.

4. Tighten the packing gland very evenly, use only sufficient pressure to stop packing form leaking and still allow easy travel of connecting rod. It is recommended that you do not use a wrench to tighten the packing gland nuts. Occasionally, a wrench may be necessary to overcome the friction caused by paint, rust or imperfect threads, ect., in which case extreme care should be exercised. The connecting rod should be lubricated with oil or grease. Frequency depends upon use.

5. DO NOT FORCE THE PISTON AGAINST STOPS.

6. use only U.L. approved packing which my be ordered from your dealer or contacting Krug Products.

7. Should the pump fail to operate properly, it could be from one of the following causes:

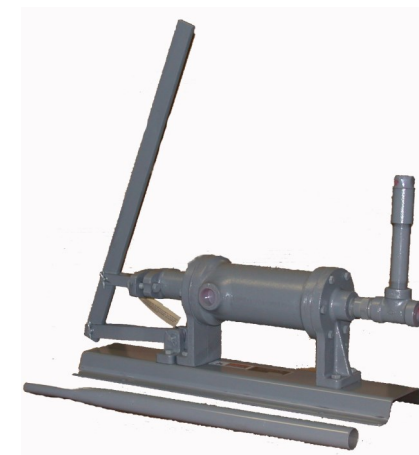
1. Check valve not sealing properly due to foreign matter on valve seal.
2. Valve in piston not sealing properly.
3. Piston rings may be worn to the extent that they allow liquid to by-pass.

Should any of the above causes be your trouble, have a competent qualified mechanic remedy the trouble or return it to be repaired.

8. Should pump require an excessive amount of physical pressure to operate, stop pumping and investigate. The trouble could be from one or more of the following cases.

1. If filling a mobile tank you my be working against excessive pressure built up in the mobile tank. Correct by checking the excess flow check valve in the vapor return line.
2. The excess flow check valve at the storage tank withdrawal may have snapped shut. To correct, close the shut off valve on the liquid line to the pump and wait a few moments until valve reopens. It may be necessary to install a larger excess flow check valve on the storage tank.
3. Packing may be adjusted far too tight. Correct by loosening the packing, lubricating, and readjust.

9. Handle should be center position (straight up and down) when allowing fuel to flow freely through pump without manual operation. When pump is not in use, be sure to keep handle in forward position to avoid weathering of the connecting rod. However, due to pressure in the lines and in the pump cylinder, you will probably get a hydraulic action which will force the handle to the our position. To avoid this, uses a light weight chain to secure the handle in the forward position.



Installation, Operating And Servicing Instructions For

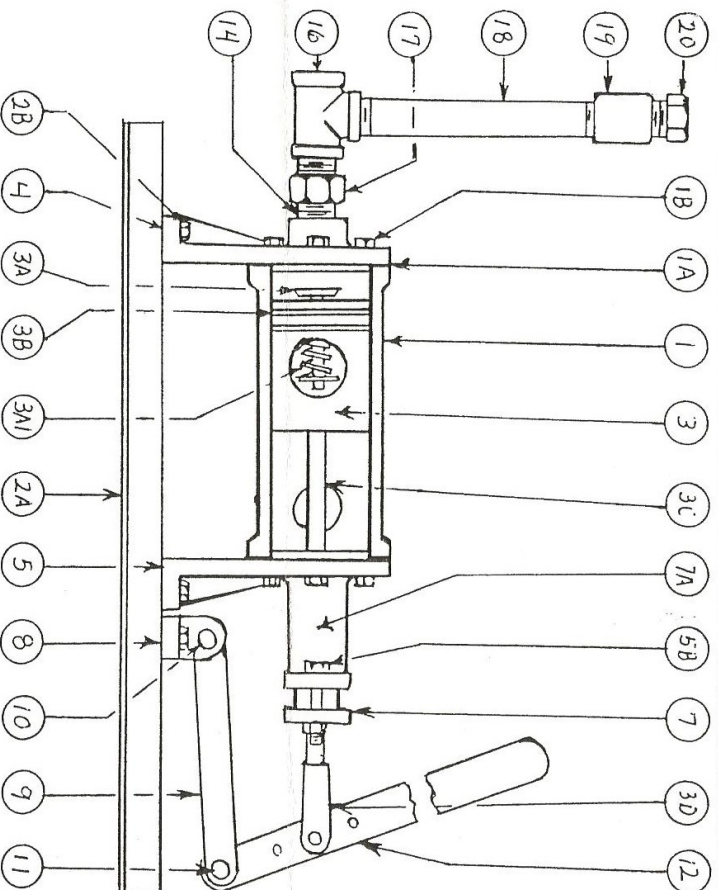
Krug Model G Hand Pump

Krug Products
PO Box 387
419 SW 2nd
Madison SD 57042

Ph. 1(605)256-2851
Toll Free: 1(800)259-2851
Fax: 1(605)256-4467

Krugprod@iw.net
Krug.products@gmail.com
www.Krug-products.com

Krug Piston Type Hand Pump



Part NO.	QTY. PER	Part Description
1	1	Barrel
1A	2	Barrel Gaskets
1B	12	5/16 Cap Screws
2A	1	Base
2B	6	3/8 Bolts with Nuts
3	1	Piston Assembly
3A*	1	Piston Assembly (NEW STYLE)
3B	2	Piston Ring
3C	1	Connecting Rod
3CA*	1	Connecting Rod (NEW STYLE)
3D	1	Clevis and Pin Assembly
3DA*	1	Clevis and Pin Assembly (NEW STYLE)
4	1	Discharge Port Casting
5	1	Packing End Casting
5B	2	7/16 x 2 1/4 Inch Bolts
7	1	Packing Gland
7A	1	Packing
8	1	Linkage Bracket
9	2	Handle Linkage
10	1	1 3/4 Linkage Pin
11	1	1 Linkage Pin
12	1	Handle
13	1	Handle Extension (not shown)
14	1	3/4 Heavy Close Nipple
16	1	3/4 Heavy Tee
17	1	Check Valve
18	1	3/4 x 7 Nipple
19	1	3/4 Steel Coupling
20	1	375 PSI Relief Valve

M26-2—Hose Kit

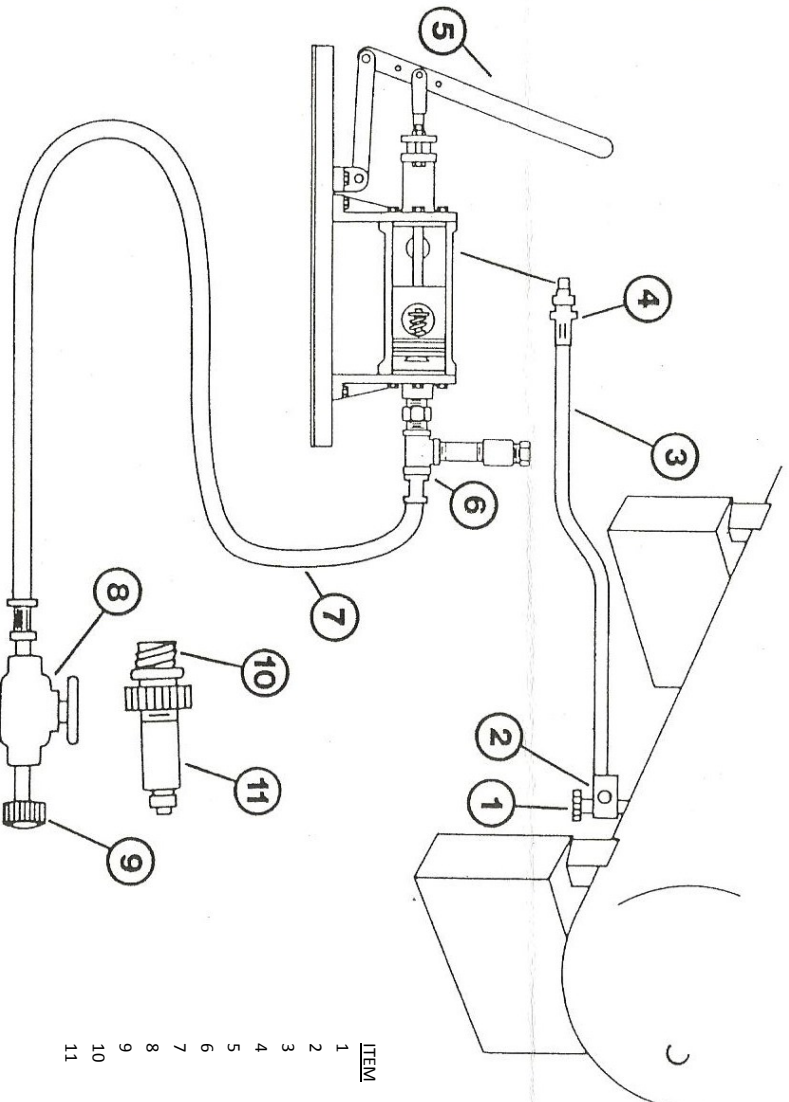
- (1) 1/2in x 12ft Hose Assembly, (2) 1/2mpt Hose Ends, (1) 3/4in x 5ft Hose Assembly,
 (2) 3/4mpt Hose Ends, (1) Check Lock Adaptor, (1) Transfer Valve, (1) 1 in mpt x 3/4
 inpt Swivel Adaptor, (1) 3/4mpt x 1/2mpt Bushing, (1) 3/4 Inpt Ball Valve, (1)
 Liquid Hose Coupling, (1) POL Fill Adaptor

M25-1A—Repair Kit (NEW STYLE)

- (2) Barrel Gaskets, (12) 5/16 x 1in Screws, (2) Piston Rings, (1) Connecting Rod (thread
 size 5/8 x 18in), (1) Clevis Pin and Cotter Pin, (1) Connecting Rod Packing
 size 1/2 x 13nc, (1) Clevis Pin and Cotter Pin, (1) Connecting Rod Packing

* NEW STYLE — Thread Size 5/8 x 18in
 Serial Number starts with
 C or HC

** OLD STYLE — Thread Size 1/2 x 13nc



BILL OF MATERIALS

ITEM	DESCRIPTION
1	7572c-14 Check Lock Adaptor
2	7550P Transfer Valve
3	3/4 x 5ft Hose Swivel One End
4	1 x 3/4 Reducer Bushing
5	Krug Hand Pump
6	3/4 x 1/2 Reducer Bushing
7	1/2 x 12ft Hose Assembly
8	7704P Globe Valve
9	3175B Hose Coupling
10	5764A Adaptor
11	7193D-10 Fill Connector w/o Ring Nose

* Longer hoses available upon request.

* Vapor return assemblies available upon request.