

# Types N551 and N851

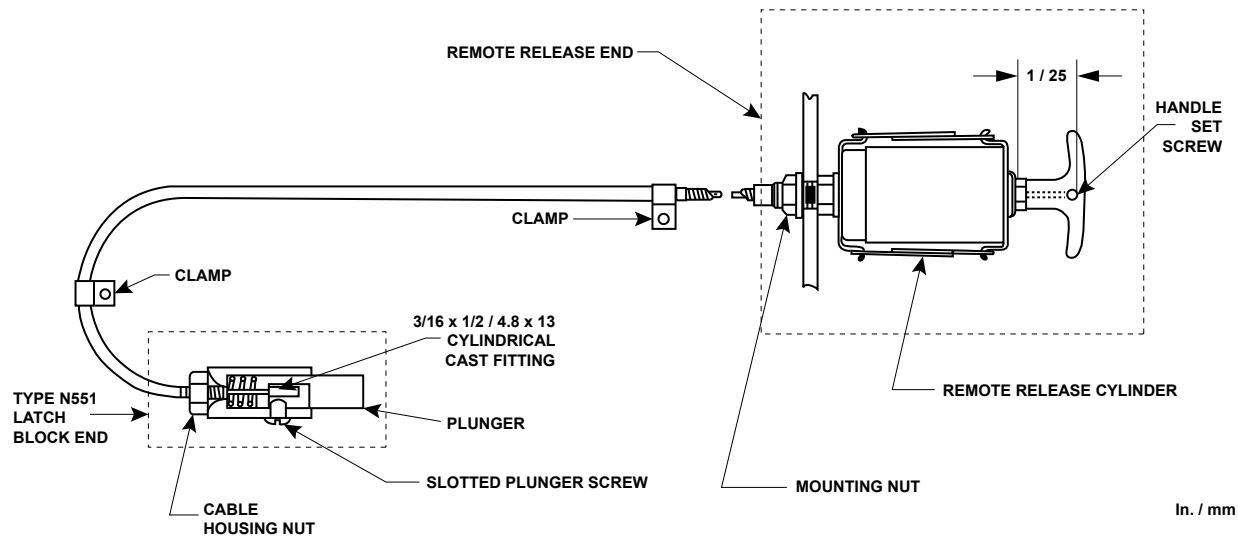


Figure 3. Type P164B Cable Release Installation Schematic

8. Replace the plunger in the latch block, oriented so the screw will enter the plunger slot. Tighten the screw.
9. The end of the cable housing and cable housing nut fit into the conical end of the latch block. Pulling the excess inner cable through the housing from the remote release end will hold the housing in the latch block.
10. Mount the remote release cylinder assembly to a suitable support at the remote release location (7/16 in. / 11 mm diameter mounting hole) but do not tighten the mounting nut.
11. At the remote release end, strip about 3/4 in. / 19 mm of vinyl cover from the cable housing end.
12. Insert the inner cable completely through the release cylinder. Screw the bare cable housing end into the remote release cylinder by rotating the cylinder. Tighten the mounting nut.
13. Pull any slack from the inner cable, just tight enough so that the latch is not activated, and cut the inner cable off 1 in. / 25 mm past the remote release cylinder end.
14. Insert the 1 in. / 25 mm bare inner cable into the remote release handle shaft. Push the remote release handle completely into the remote release cylinder. Tighten the handle set screw to secure the handle to the inner cable.
15. Test the remote release and Type N551 operation from the most remote location. Rotate handle counterclockwise to open valve. Valve must stay open. HANDLE AND VALVE MUST QUICKLY “SNAP” CLOSED when (a) the remote release cable is pulled and (b) handle is pushed closed from the open position.

## WARNING

All open Type N551 emergency valve(s) attached to the remote release must properly close when the release cable is pulled.

## Pneumatic Hook-Up

### Type P327D Pneumatic Release Block Installation

If several valves are installed at the same location, remote release may be accomplished with the Type P327D pneumatic release block which replaces the cable latch block installed on the Type N551 valve.

To install the Type P327D, see Figure 4:

1. Close the Type N551 valve. Handle is parallel to the pipe.
2. Remove the long end of the external spring from under the latch block. **DO NOT REMOVE SPRING FROM HANDLE.**
3. Remove latch bolt(s). Older valves will have 2 bolts. **DISCARD CABLE LATCH BLOCK.**

## CAUTION

Possible hand and finger pinch point between closing Type N551 handle and latch block. Handle closes quickly and with extreme force. Keep hands and fingers away from handle as it closes.

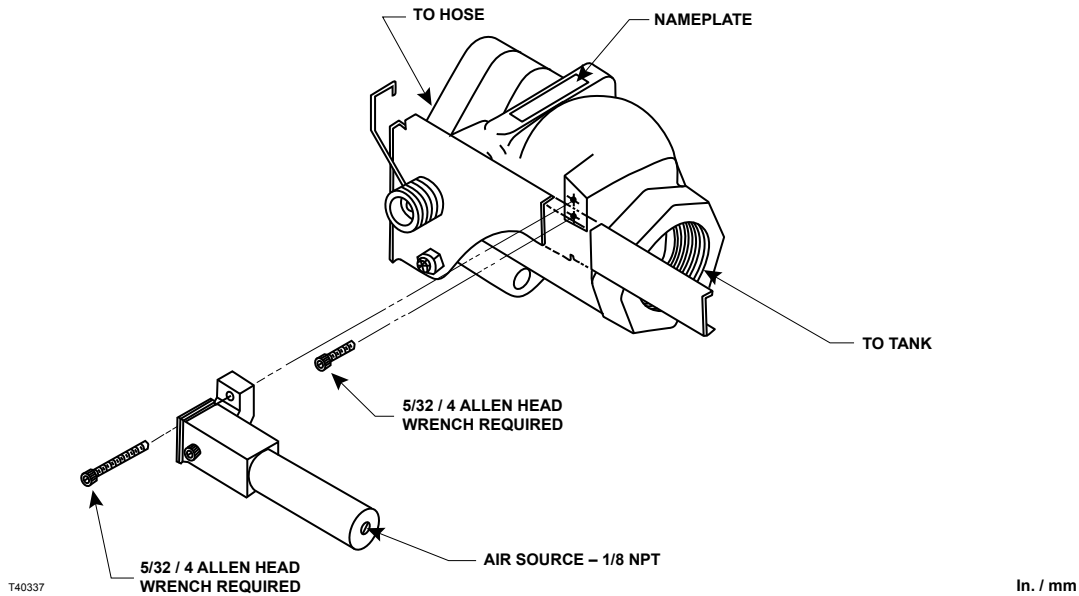


Figure 4. Type P327D Pneumatic Cylinder Installation

4. Use a 5/32 in. / 4 mm Allen head wrench to screw 1/4 in. / 6.4 mm long bolt into bottom hole.
5. Tighten until bolt head seats firmly on body.
6. Place latch block on body with lower blind hole over bolt in body.
7. Install 3/4 in. / 19 mm long bolt through second hole and firmly tighten with 5/32 in. / 4 mm Allen head wrench.
8. Refasten long end of spring under latch block by **ROTATING 180 DEGREES CLOCKWISE.**
9. Attach the remote air source to the cylinder end with appropriate supply tubing and valving. A regulated air supply of **30 to 70 psig / 2.1 to 4.8 bar** to the Type P327D pneumatic release cylinder is required for proper operation.

## CAUTION

**Possible hand and finger pinch point between closing Type N551 handle and latch block. Handle closes quickly and with extreme force. Keep hands and fingers away from handle as it closes.**

10. Test the remote release and Type N551 operation. Rotate handle counter clockwise to open valve. Valve must stay open. **HANDLE AND VALVE MUST QUICKLY "SNAP" CLOSED** when (a) air pressure is exhausted from Type P327D pneumatic remote release and (b) the handle is pushed closed from the open position.

## WARNING

**All open Type N551 Emergency Valve(s) attached to the remote pneumatic release system must properly close when air pressure is exhausted from the system. Remote release controls must quickly exhaust pressure from the supply line to close emergency valves.**

## Optional Motion Release Cable

With either the cable or pneumatic remote release hook-ups, it is possible to connect an additional cable from the Type N551's operating handle to the truck along the transfer hose(s). This cable would close the valve if the hose(s) is stretched (driver does not disconnect) beyond a preselected limit. The hook-up does not affect the normal operation of the valve.

## Motion Release Cable Installation

1. Connect a suitable release cable such as stainless steel aircraft cable to a standard "S" hook. Attach the "S" hook to the Type N551 handle as shown in Figure 5.
2. The cable should run through the bulkhead just below and to the side of the pipe. The cable should be in line with the operating lever, refer to Figure 5.