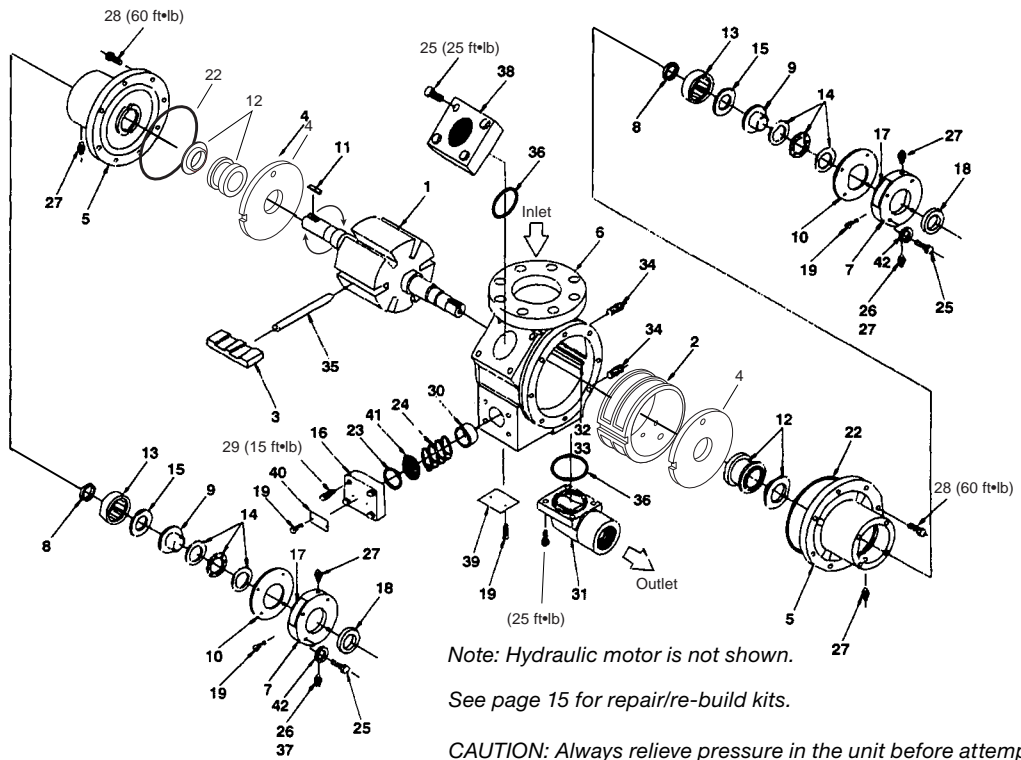


# Appendix E—Parts Details for Models Z/ZH3200



| O-ring Code |                        |
|-------------|------------------------|
| A           | Buna-N                 |
| B           | Neoprene <sup>®1</sup> |
| D           | Viton <sup>®1</sup>    |
| E           | Teflon <sup>®1</sup>   |

| Ref. No. | Part No.       | Description                          | Qty     |
|----------|----------------|--------------------------------------|---------|
| 1.       | 4495-X2R       | Rotor shaft assembly                 | 1       |
| 2.       | 4242           | Cam                                  | 1       |
| 3.       | 4232           | Vane <sup>3</sup>                    | 6       |
| 4.       | 4231           | Sideplate                            | 2       |
| 5.       | 4488           | Head                                 | 2       |
| 6.       | 4239           | Case                                 | 1       |
| 7.       | 4417           | Bearing cap                          | 2       |
| 8.       | 4438           | Grease seal                          | 2       |
| 9.       | 4435           | Mounting ring                        | 2       |
| 10.      | 4439           | Bearing shim (.002) red              | As req. |
|          | 4439-1         | Bearing shim (.010) brown            |         |
|          | 4439-2         | Bearing shim (.020) yellow           |         |
| 11.      | 2270           | Shaft key                            | 2       |
| 12.      | 4431-X_2       | Mech. seal assembly <sup>2</sup>     | 2       |
| 13.      | 2754           | Bearing outer race                   | 2       |
| 14.      | 4432           | Thrust bearing assembly              | 2       |
| 15.      | 2760-244       | Retainer ring                        | 2       |
| 16.      | 1174-2         | Relief valve cap                     | 1       |
| 17.      | 1359           | Lubrication instruction plate        | 2       |
| 18.      | 4441           | Grease seal                          | 2       |
| 19.      | 7012-006SF019E | Screw                                | 8       |
| 20.      | —              | Not shown                            | —       |
| 21.      | —              | Not shown                            | —       |
| 22.      | 2-262_         | O-ring—case <sup>2</sup>             | 2       |
| 23.      | 2-224_         | O-ring—relief valve cap <sup>2</sup> | 1       |
| 24.      | 1240           | Relief valve spring                  | 1       |
| 25.      | 7001-037NC150A | Bolt—3/8-16 x 1-1/2" hex head        | 16      |

| Ref. No. | Part No.       | Description                    | Qty     |
|----------|----------------|--------------------------------|---------|
| 26.      | 2158           | 1/8" NPT grease zerk           | 2       |
| 27.      | 1343           | 1/8" NPT relief fitting        | 4       |
| 28.      | 7001-050NC150A | Bolt—1/2-13 x 1-1/2" hex head  | 16      |
| 29.      | 7001-031NC125A | Bolt—5/16-16 x 1-1/4" hex head | 4       |
| 30.      | 1241           | Relief valve                   | 1       |
| 31.      | 1172-1.5       | Outlet flange—1.5" NPT         | 1       |
|          | 1172-1.5S      | Outlet flange—1.5" WF          | 1       |
|          | 1172-2         | Outlet flange—2" NPT           | 1       |
|          | 1172-2S        | Outlet flange—2" WF            | 1       |
|          | 1947           | Outlet flange—1.5" NPT ell     | 1       |
|          | 4243           | Outlet flange—2" NPT ell       | 1       |
| 32.      | 4241           | Cam key                        | 1       |
| 33.      | 3253           | Cam key pin                    | 1       |
| 34.      | 3442           | 1/4" NPT pipe plug             | 1       |
| 35.      | 4262-X         | Vane driver                    | 3       |
| 36.      | 2-234_         | O-ring—flange <sup>2</sup>     | 1       |
| 37.      | 2159           | Lubricap                       | 2       |
| 38.      | 1172-1.5       | Aux. inlet flange—1.5" NPT     | 1       |
|          | 1172-1.5S      | Aux. inlet flange—1.5" WF      | 1       |
|          | 1172-2         | Aux. inlet flange—2" NPT       | 1       |
|          | 1172-2S        | Aux. inlet flange—2" WF        | 1       |
|          | 1920-3         | Aux. inlet flange—blind        | 1       |
|          | 4243           | Aux. inlet flange—2" NPT ell   | 1       |
| 39.      | 2649           | Nameplate                      | 1       |
| 40.      | 4248           | Relief valve nameplate         | 1       |
| 41.      | 4282           | Relief valve shim              | As req. |
| 42.      | 7206-037A      | 3/8" lockwasher                | 8       |

<sup>1</sup>Registered trademarks of the DuPont company.

<sup>2</sup> \_ denotes O-ring code. See chart above.

<sup>3</sup>Slots in vanes must face TOWARDS the direction of rotation