

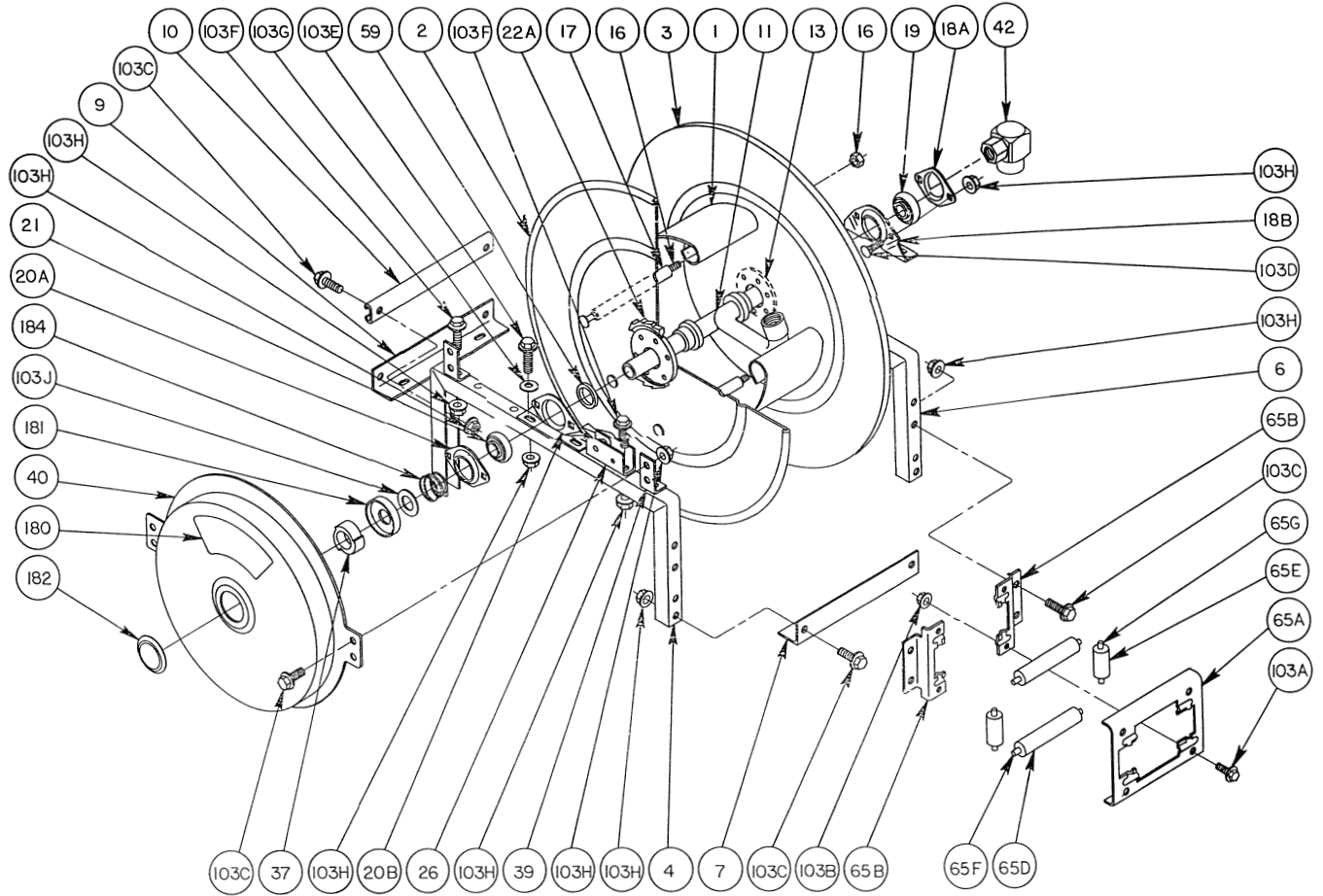


Hannay Reels®

The reel leader.

Hannay Reels, Inc., 553 State Route 143
 Westerlo, NY 12193-0159
 Telephone 518-797-3791 • Toll Free 1-877-GO-REELS (467-3357)
 FAX 1-800-REELING (733-5464)
 INT'L FAX (518) 797-3259
 Website: www.hannay.com
 E-mail: reels@hannay.com

ISO 42 PARTS LIST SERIES 800



PARTS LIST ISO-42 SERIES 800

When ordering parts
BE SURE TO SPECIFY COMPLETE MODEL NUMBER and SERIAL NUMBER OF REEL.
USE PART NUMBER!

<u>Item No.</u>	<u>Description</u>	<u>PART NUMBER</u>	<u>Quantity</u>
1	Drum, 10-1/2" Dia. - Wrap Around (Specify Model).....	9905.0138	1
1	Drum, 15-1/2" Dia. - Wrap Around (Specify Model).....	9905.0178	1
2	Front Disc, 19-20, 18-3/4" Dia. (Specify Model)	9903.0821	1
2	Front Disc, 23-24, 21-3/4" Dia. (Specify Model)	9903.1121	1
2	Front Disc, 25-26, 24-3/4" Dia. (Specify Model)	9903.1321	1
2	Front Disc, 28-29, 26-3/4" Dia. (Specify Model)	9903.1521	1
2	Front Disc, 30-31, 28-3/4" Dia. (Specify Model)	9903.1621	1
3	Back Disc, 19-20, 18-3/4" Dia. (Specify Model).....	9903.0821	1
3	Back Disc, 23-24, 21-3/4" Dia. (Specify Model).....	9903.1121	1

**PARTS LIST
ISO-42
SERIES 800**

When ordering parts
BE SURE TO SPECIFY COMPLETE MODEL NUMBER and SERIAL NUMBER OF REEL.
USE PART NUMBER!

<u>Item No.</u>	<u>Description</u>	<u>PART NUMBER</u>	<u>Quantity</u>
3	Back Disc, 25-26, 24-3/4" Dia. (Specify Model).....	9903.1321	1
3	Back Disc, 28-29, 26-3/4" Dia. (Specify Model).....	9903.1521	1
3	Back Disc, 30-31, 28-3/4" Dia. (Specify Model).....	9903.1621	1
4	Front Frame, 19-20, 1-1/2" Rollform Channel.....	9906.0081	1
4	Front Frame, 23-24, 1-1/2" Rollform Channel.....	9906.0111	1
4	Front Frame, 25-26, 1-1/2" Rollform Channel.....	9906.0121	1
4	Front Frame, 28-29, 1-1/2" Rollform Channel.....	9906.0141	1
4	Front Frame, 30-31, 1-1/2" Rollform Channel.....	9906.0151	1
6	Back Frame, 19-20, 1-1/2" Rollform Channel.....	9906.0081	1
6	Back Frame, 23-24, 1-1/2" Rollform Channel.....	9906.0111	1
6	Back Frame, 25-26, 1-1/2" Rollform Channel.....	9906.0121	1
6	Back Frame, 28-29, 1-1/2" Rollform Channel.....	9906.0141	1
6	Back Frame, 30-31, 1-1/2" Rollform Channel.....	9906.0151	1
7	Front Foot.....	Specify Model	1
9	Back Foot.....	Specify Model	1
10	Back Brace - C Channel.....	Specify Model	1
11	1" Hub Assembly, Welded Iron Pipe w/1" FNPT Riser (Specify Model).....	9901.1600	1
13	Disc Washer w/Rivets, EH-936.....	9965.0015	1
16	3/8" - 16 Carriage Bolt w/Nut (10-1/2" Drum).....	Specify Model	6
16	3/8" - 16 Carriage Bolt w/Nut (15-1/2" Drum).....	Specify Model	10
17	Spacer Pipe (10-1/2" Drum).....	Specify Model	6
17	Spacer Pipe (15-1/2" Drum).....	Specify Model	10
18A	Self Aligning Bearing Holder (Back).....	9902.2800	1
18B	Self-Aligning Bearing Pillow Block (Back).....	9902.2900	1
19	Self-Aligning Bearing Insert (Back).....	9902.1500	1
20A	Self-Aligning Bearing Holder (Front).....	9902.2800	1
20B	Self-Aligning Bearing Pillow Block (Front).....	9902.2900	1
21	Self-Aligning Bearing Insert (Front).....	9902.1500	1
22A	Ratchet Wheel.....	9922.0015	1
26	Ratchet Locking Assembly, GH-784.....	9922.0005	1
37	Spring Arbor For A & D Spring.....	9922.0001	1
37	Spring Arbor For B, G, & J Spring.....	9922.0002	1
39	Spring Mounting Bracket.....	9922.0009	2
40	Spring Motor, A.....	9921.0010	1
40	Spring Motor, B.....	9921.0015	1
40	Spring Motor, D.....	9921.0020	1
40	Spring Motor, G.....	9921.0021	1
40	Spring Motor, J.....	9921.0030	1
42	1" 90 Deg. FxF B.P. Swivel Joint.....	9929.8538	1
59	Hub Spacer.....	9954.0021	2
65A	Roller Bracket Frame, GH-895.....	Specify Model	1
65B	Roller Mounting Bracket, GH-896.....	9940.0170	1
65D	1" Dia Roller for Stamped Housing, GH-1012.....	Specify Model	2
65E	1" Dia. Roller for Stamped Housing, 2" Long, GH-1012A.....	9940.0180	2
65F	1/4" Dia. Stainless Steel Rod.....	Specify Model	2
65G	1/4" Dia. Stainless Steel Rod, 2-3/4" Long.....	9940.0190	2
66	EH-678D Roller Assembly (Not Shown).....	9939.0009	1
103A	5/16" - 18 x 3/4" Spinlock Bolt.....	9904.2101	4
103B	5/16" - 18 Spinlock Nut.....	9904.6100	4
103C	3/8" - 16 x 3/4" Spinlock Bolt.....	9904.2201	14
103D	3/8" - 16 x 3/4" Carriage Bolt.....	9904.0201	4
103E	3/8" - 16 x 1-1/4" Spinlock Bolt.....	9904.2203	4
103F	3/8" - 16 x 1-1/2" Spinlock Bolt.....	9904.2204	4
103G	3/8" Flat Washer.....	9954.0007	4
103H	3/8" - 16 Spinlock Nut.....	9904.6200	22
103J	1-7/8" O.D. x 1-5/16" I.D. x .049 Washer.....	9954.0019	1
180	Caution Decal, "Spring Under Tension".....	9922.0010	1
181	Cap-Plug for Spring (Inner Side).....	9922.0036	1
182	Cap-Plug for Spring (Outer Side).....	9922.0037	1
184	Dust Cap Spring.....	9922.0038	1