

Installation of the PR4-0023 Cable/Sheath Extension Kit

March 2003

Form FVC 060 - Rev 01

KEEP THIS DOCUMENT WITH THE PRODUCT UNTIL IT REACHES THE END USER.

The PR4-0023 Cable/Sheath Extension Kit is intended to permit transfer of a PR4 Passive Safety Shut-down device to a “longer” hose or to a hose that is no more than 6” shorter.

TOOLS REQUIRED: Safety Equipment (i.e. gloves, goggles, and clothing), Pliers, Hammer, Chisel, 3/16” Allen Wrench, two 18” Pipe Wrenches, Bench Vise, Flat Blade Screwdriver, *Form FVC 054*

Installation and Operating Instructions

1. Remove the acme fittings and hammer unions from both ends of the hose assembly.

2. Lay the hose in a straight line on the floor. With a pair of pliers, grab the Cable Crimp protruding from the end of the Outlet Housing, as shown below.



3. Secure the Outlet Housing and pull the cable outward until you feel the Poppet release to it's “tripped” position.

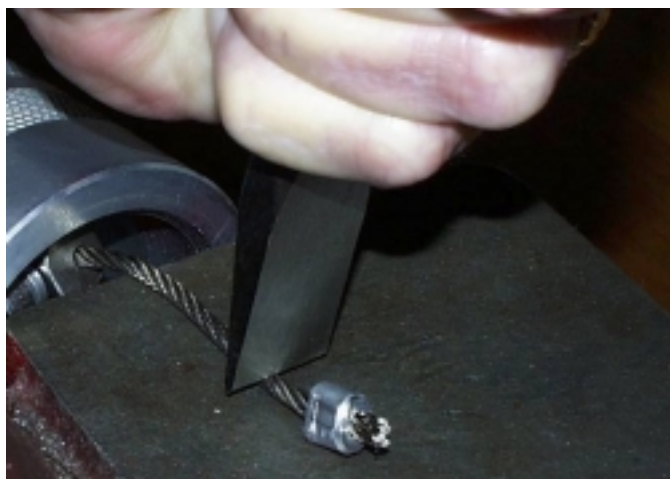


NOTE: This step is essential and will place the PR4 poppet in a position that will allow installation of the Cable Extension Kit.

4. Place the hose in a “U” position with the Outlet Housing end on a flat, hard, metal surface (such as a bench vise).



5. Using a hammer and chisel, remove the Cable Crimp from the end of the cable.



6. Secure the Outlet Housing end in the bench vise, as shown below.



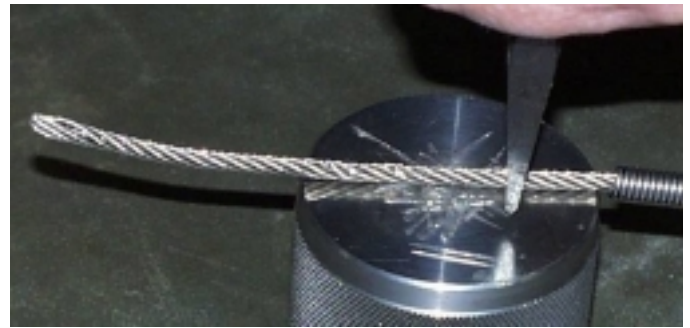
7. Using the pliers, pull the Cable Clamp outward and loosen the socket head cap screws with the 3/16" Allen wrench. As the second screw is loosened, the Cable Clamp will be free to slide off the end of the cable.



8. With the two 18" Pipe Wrenches positioned as shown, remove the Outlet Housing from the hose.



9. To eliminate the flat spots on the cable caused by the cap screws, use the hammer and chisel to cut the cable at a point just in front of the Sheath.



10. With the two 18" Pipe Wrenches positioned as shown, remove the Main Housing from the opposite end of the hose.



11. Pull the Cable/Sheath Assembly (attached to the Main Housing) completely out of the hose.

12. The Sheath is secured by a flat Spiral Ring. Locate the end of the spiral with the flat blade screwdriver and pry the Spiral Ring from the Sheath Housing groove.



13. Remove the Sheath from the entire length of the Cable.

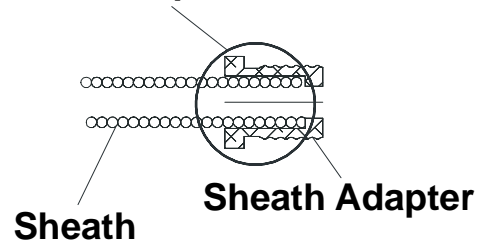
14. Measure 12" from the **end of the Sheath** without the tang and mark.

15. Using the hammer and chisel, cut the 12" from the end of the Sheath, **opposite the end with the tang**. Discard the 12" piece.



16. Install the Sheath Adapter over the end of the Sheath just cut.

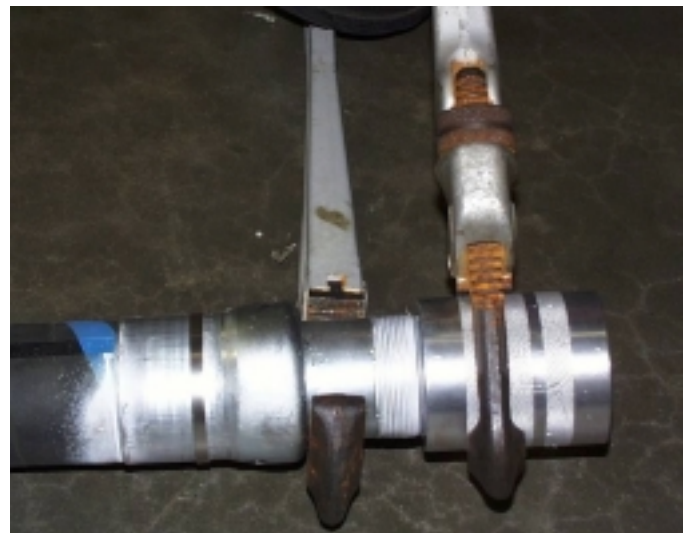
Sheath must be all the way in the Sheath Adapter



17. Unpack the 3 ft. long Large Sheath from the kit. Twist the Large Sheath onto the Sheath Adapter in a **counter-clockwise** direction.



18. Re-install the Outlet Housing onto the end of the new hose that the PR4 is being transferred to, with the two 18" Pipe Wrenches positioned as shown.



19. Lay the new hose in a straight line on the floor and measure **as shown in step 4 of FVC054 and write this number down.**

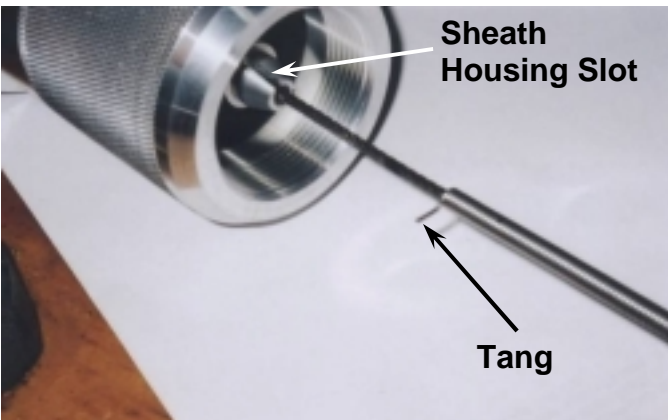
20. Lay the two Sheathes (connected by the Sheath Adapter) in a straight line on the floor.

21. Measuring from the tang end (on the Small Sheath), make a mark on the Large Sheath at the length recorded in step 19, above. **See step 5 of FVC054 for photos.**

22. Remove the Large Sheath from the Sheath Adapter by twisting in a clockwise direction and cut it at the marked spot with the hammer and chisel.



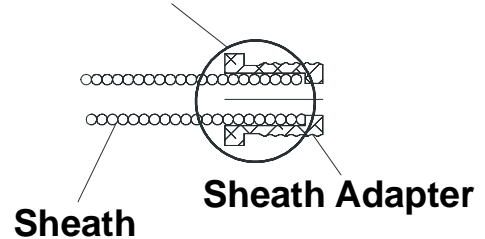
23. Re-install the tang end of the Small Sheath over the entire length of the cable and place the tang in the Sheath Housing Slot.



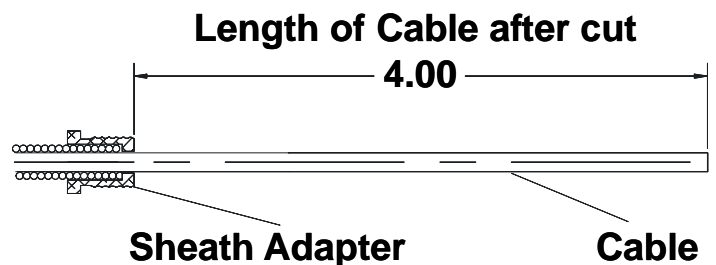
24. Re-install the Spiral Ring as shown in step 7 of FVC054.

25. Make sure the Sheath Adapter is still installed over the end of the Small Sheath before

Sheath must be all the way in the Sheath Adapter



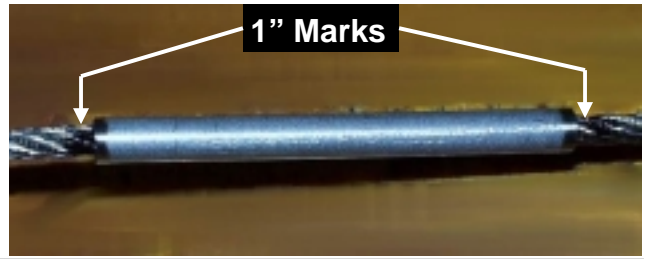
26. Measure 4" out from the Sheath Adapter along the cable and cut the cable with the hammer and chisel.



27. Using a marking pen, make a mark 1" from the end of the cable.

28. Unpack the 3 ft. long piece of Extension Cable from the cable kit and make a mark 1" from one end of the Cable.

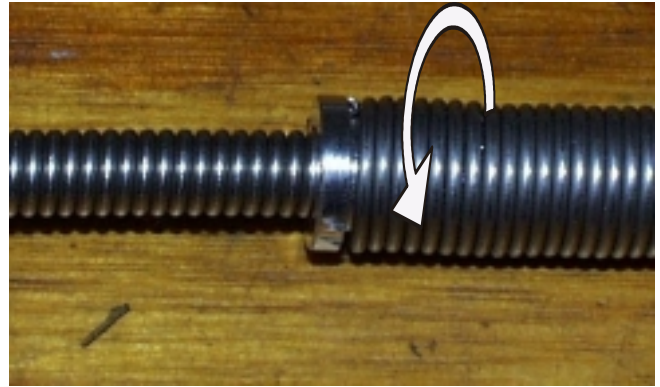
29. Unpack the 2" long Cable Connector from the kit.
Insert the ends of the two Cables up to the 1" marks.



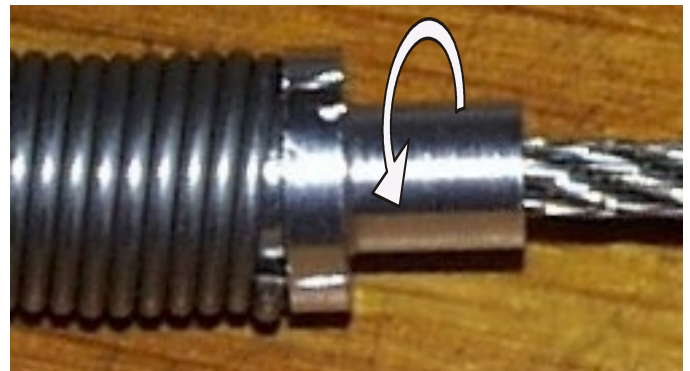
30. Carefully place the Cable Connector, with both Cables installed, into the jaws of a bench vise. Be sure each Cable is still inserted 1" into the Cable Connector and tighten the vise. The Cable Connector will be flattened and will grip the Cable ends tightly.



31. Re-install the Large Sheath on the threaded portion of the Sheath Adapter by turning **counter-clockwise**. The end of the Large Sheath must be flush with the flange on the Sheath Adapter.



32. Unpack the Spider Adapter from the kit, install it over the Extension Cable and thread it into the Large Sheath turning **counter-clockwise**. The end of the Large Sheath must be flush with the flange on the Spider Adapter.



33. To install the Extended PR4 to a new 2" transfer hose, follow the steps of FVC054, beginning with step 8.