

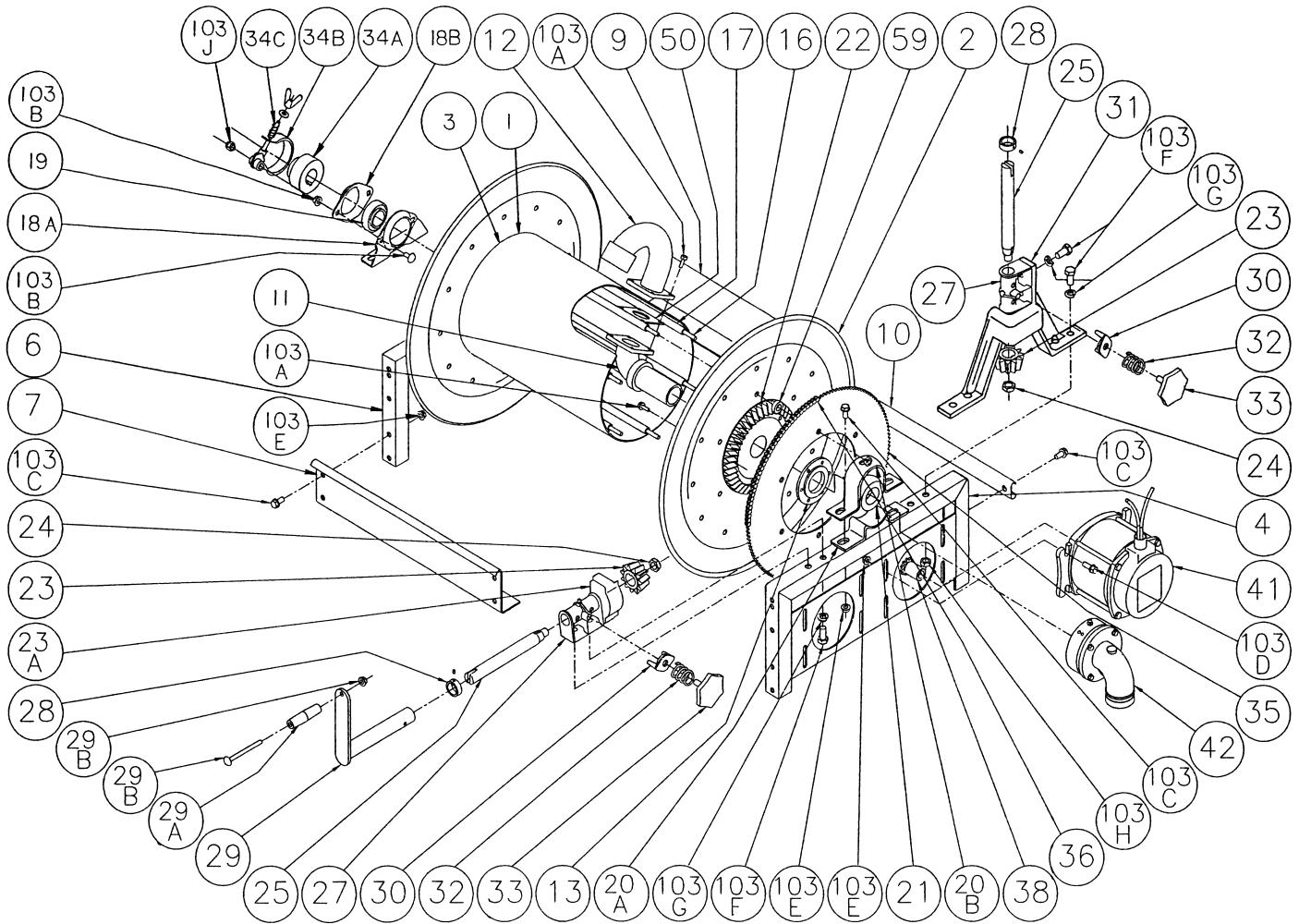


Hannay Reels®

The reel leader.

Hannay Reels, 553 State Route 143
 Westerlo, NY 12193-0159
 Telephone 518-797-3791 • Toll Free 1-877-GO-REELS (467-3357)
 FAX 1-800-REELING (733-5464)
 INT'L FAX (518) 797-3259
 Website: www.hannay.com
 E-mail: reels@hannay.com

ISO 41 PARTS LIST 1 1/2" HOSE REELS With Fabricated Frame & Ball Bearing Swivel Joint



When ordering parts BE SURE TO SPECIFY COMPLETE MODEL NUMBER and SERIAL NUMBER OF REEL. USE PART NUMBER!

Item No.	Description	PART NUMBER	Quantity
1	Drum, 10-1/2" Diameter (Specify Model)	9905.3131	1
2	Front Disc, 19-20 Series	9903.0821	1
2	Front Disc, 23-24 Series	9903.1121	1
2	Front Disc, 25-26 Series	9903.1321	1
2	Front Disc, 28-29 Series	9903.1521	1
2	Front Disc, 30-31 Series	9903.1621	1
2	Front Disc, 33-34 Series	9903.1831	1
3	Back Disc, 19-20 Series	9903.0821	1
3	Back Disc, 23-24 Series	9903.1121	1
3	Back Disc, 25-26 Series	9903.1321	1
3	Back Disc, 28-29 Series	9903.1521	1
3	Back Disc, 30-31 Series	9903.1621	1
3	Back Disc, 33-34 Series	9903.1831	1

**PARTS LIST
ISO-41
1-1/2" Hose Reel**

When ordering parts
BE SURE TO SPECIFY COMPLETE MODEL NUMBER and SERIAL NUMBER OF REEL.
USE PART NUMBER!

<u>Item No.</u>	<u>Description</u>	<u>PART NUMBER</u>	<u>Quantity</u>
4	Front Frame, 19-20 Series	9906.1081	1
4	Front Frame, 23-24 Series	9906.1111	1
4	Front Frame, 25-26 Series	9906.1121	1
4	Front Frame, 28-29 Series	9906.1141	1
4	Front Frame, 30-31 Series	9906.1151	1
4	Front Frame, 33-34 Series	9906.1161	1
6	Back Frame, 19-20 Series	9906.0081	1
6	Back Frame, 23-24 Series	9906.0111	1
6	Back Frame, 25-26 Series	9906.0121	1
6	Back Frame, 28-29 Series	9906.0141	1
6	Back Frame, 30-31 Series	9906.0151	1
6	Back Frame, 33-34 Series	9906.0161	1
7	Front Foot (Specify Model).....	9907.3000	1
9	Back Foot (Specify Model).....	9907.3000	1
10	"C" Channel Brace (Specify Model).....	9907.7000	2
11	1-1/2" Flange Hub Only (Specify Model)	9901.3640	1
12	1-1/2" FNPT Iron Pipe Riser Only	9901.3760	1
13	EH-936 Washer	9965.0015	2
16	3/8"-16 Carriage Bolt w/Nut	Specify Model	6
17	3/8" Spacer Pipes (Specify Model)	9904.3200	6
18	Back Bearing Complete	9902.1400	1
18A	Self-Aligning Pillow Block, Back.....	9902.2900	1
18B	Self-Aligning Bearing Holder, Back	9902.2800	1
19	Back Bearing Insert Only	9902.1500	1
20	Front Bearing Complete	9902.1610	1
20A	Bearing Holder (Bottom Strap), Front	9902.2950	1
20B	Bearing Holder (Top Strap), Front	9902.2955	1
21	Front Bearing Insert Only (With Grease Fitting)	9902.1700	1
22	Ring Gear, H-26 (Up to 25-26).....	9914.0372	1
22	Ring Gear, H-28.....	9914.0382	1
23	Pinion Gear, H-27 (Up to 25-26)	9914.0393	1
23	Pinion Gear, H-29.....	9914.0403	1
23A	Gear Guard	9914.0618	1
24	5/8"-18 SAE Hex Nut (ESNA)	9904.5600	1
25	Pinion Shaft (Specify Model)	9914.0250	1
27	Side Pinion Bearing	9914.0243	1
28	Collar & Set Screw	9914.0351	1
29	Crank Handle, H-18 Complete.....	9914.0011	1
29A	Hand Crank Handle	9914.0506	1
29B	Hand Crank Handle Bolt w/Nut	9914.0511	1
30	Brake Pad, H-3.....	9914.0433	1
31	Vertical Rewind Bracket	9914.0233	1
32	Brake Spring, H-31.....	9914.0451	1
33	Brake Wheel.....	9914.0413	1
34A	Comet Brake Hub.....	9947.0038	1
34B	Comet Brake Strap only.....	9947.0091	1
34C	Comet Brake Tention Adjuster (Bolt, Spring, Washer, Wing Nut)	9947.0092	1
35	112T35 Disc Sprocket	9910.1321	1
35	138T35 Disc Sprocket	9910.1423	1
35	180T35 Disc Sprocket	9910.1526	1
36	Chain, #35	Specify Model	1
38	Motor Sprocket, 11T35 x 1-5/16.....	9910.1118	1
41	Motor, 12 Volt Explosion-Proof.....	9915.0003	1
42	1-1/2" 90 Deg. FxF Swivel Joint.....	9930.4210	1
50	Gasket	9965.0021	1
59	Sprocket Spacer.....	9954.0017	6
103A	5/16"-18 x 1/2" Hex Head Bolt	9904.1101	9
103B	3/8"-16 x 3/4" Carriage Bolt w/Nut (w/o Comet Brake)	9904.0201	2
103B	3/8"-16 x 2" Carriage Bolt w/Nut (w/Comet Brake)	9947.0093	1
103C	3/8"-16 x 3/4" Spinlock Bolt	9904.2201	18
103D	3/8"-16 x 1" Spinlock Bolt.....	9904.2202	4
103E	3/8"-16 Spinlock Nut.....	9904.6200	20
103F	1/2"-13 x 1" Hex Head Bolt	9904.1402	6
103G	1/2" Lock Washer	9954.0030	6
103H	1/2"-13 Hex Nut	9904.5400	4
103J	3/8"-16 ESNA Nut	9904.5201	1