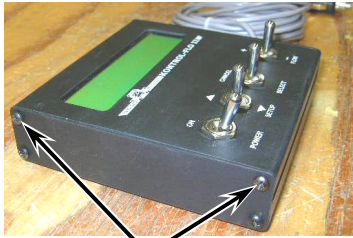


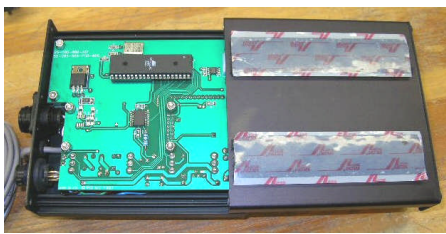
IMPORTANT **BEFORE HANDLING THE CHIP**
 In order to prevent permanent damage to the chip from a static electricity discharge, touch a grounded object, such as an appliance with a three-prong plug, prior to handling the chip.



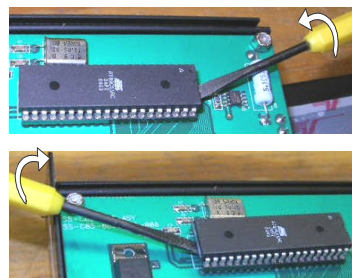
On the left side of the controller, remove the two screws on the top of the casing.



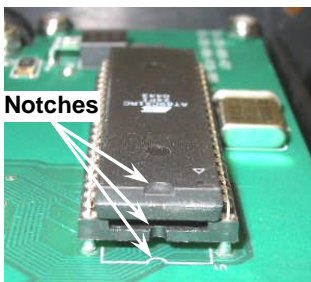
On the right side of the controller, remove the two screws on the bottom of the casing.



Flip the unit over and slide the bottom of the casing off, away from the cable, as shown.



Insert a small screwdriver or a pocketknife between the chip and the board and pry upward, working the chip off from both ends.



NOTE: The prongs on the new chip may need to be aligned to fit into the socket on the board. If so, place the chip on one side on a flat surface so that each of the prongs are bent evenly.

When installing the new chip, note that the notch in the socket is matched with the diagram on the board. The notch in the chip must be aligned in the same manner.

After installing the new chip securely, replace the bottom of the casing and the four screws.

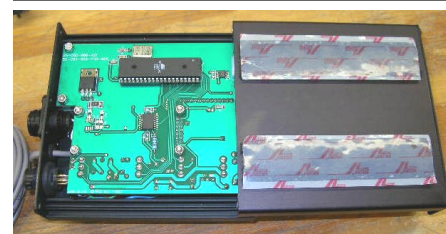
IMPORTANT **BEFORE HANDLING THE CHIP**
 In order to prevent permanent damage to the chip from a static electricity discharge, touch a grounded object, such as an appliance with a three-prong plug, prior to handling the chip.



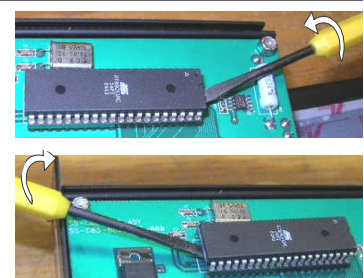
On the left side of the controller, remove the two screws on the top of the casing.



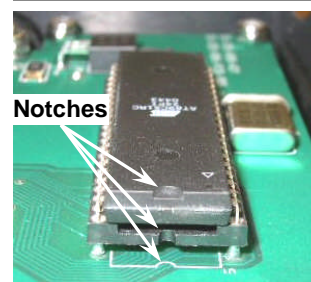
On the right side of the controller, remove the two screws on the bottom of the casing.



Flip the unit over and slide the bottom of the casing off, away from the cable, as shown.



Insert a small screwdriver or a pocketknife between the chip and the board and pry upward, working the chip off from both ends.



NOTE: The prongs on the new chip may need to be aligned to fit into the socket on the board. If so, place the chip on one side on a flat surface so that each of the prongs are bent evenly.

When installing the new chip, note that the notch in the socket is matched with the diagram on the board. The notch in the chip must be aligned in the same manner.

After installing the new chip securely, replace the bottom of the casing and the four screws.

