

Replacement of a 1599-1102 Back Check Assembly for a Model A1599P

May 2003

Form FVC1599-1102

KEEP THIS DOCUMENT WITH THE PRODUCT UNTIL IT REACHES THE END USER.

WARNING

Before installation or removal of any tank valves, the system must be purged completely of all product. Use proper safety equipment at all times. An abundant supply of clean water must be readily available and easily accessible as a means of providing IMMEDIATE First Aid treatment for exposure to ANHYDROUS AMMONIA. **To insure long term safe operation, the manufacturer recommends that under normal service conditions this product should be inspected at least once every five (5) years and be repaired or replaced as required.**

CAUTION: Contact with or inhalation of Liquid Anhydrous Ammonia or LP-Gas or their vapors can cause serious injury or death. Dispersment must be in accordance with local regulations.
 For the proper handling and storage of Anhydrous Ammonia refer to ANSI Standard K61.1.
 For the proper handling and storage of Liquefied Petroleum Gas refer to NFPA Pamphlet 58.

TOOLS REQUIRED: Safety Equipment (i.e. gloves, goggles, and clothing), 12" Adjustable Wrench, 7/16" Open End Wrench, 18" Pipe Wrench

Removal of Tank Valve for Repair or Replacement

- Step 1:** Safety equipment (i.e. gloves, goggles, and clothing) must be worn before continuing with the next step.
 - Step 2:** Before removing the valve from the tank, place the valve in FULL OPEN POSITION to insure all pressure is bled from the system.
- NOTE: An 18" Pipe Wrench will be required. See WARNING at the top of this page.

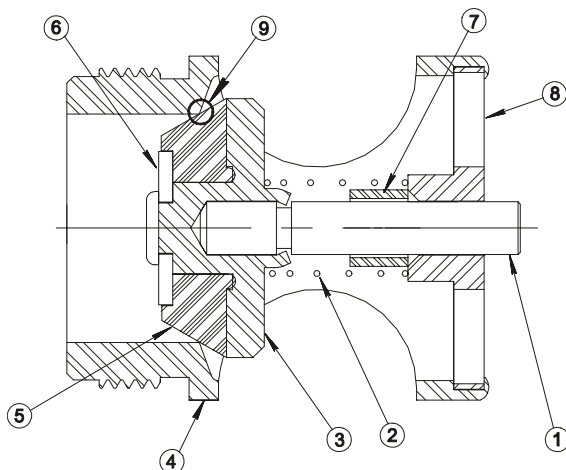
Inspection, Removal and Replacement of the Back Check Assembly

TO INSPECT: Pull the Stem ① outward, which will depress the Spring ② until the Seal Carrier ③ is at full stroke against the Spring Guide ⑦. Release the Stem and observe the spring return stroke. If the Back Check Assembly does not move freely toward the Yoke Seat ⑨ or exhibit a snap action on the spring return stroke, it must be replaced. **This procedure should also be performed when a new Back Check is installed.**

TO REMOVE: To remove the Back Check from the valve body, secure the valve body in a bench vise and, using a pipe wrench, rotate the Back Check Assembly counter-clockwise.

TO REPLACE: Clean the internal valve body threads with a wire brush or solvent and wipe or blow dry with air. Apply the provided Loctite® thread adhesive (TL 29005) to the Yoke threads and valve body threads. Install the new Back Check Assembly into the valve body and tighten "snug" with the pipe wrench, but do not over-tighten.

CAUTION: Do not allow the Loctite to contact the Stem ① or Rubber Seal ⑤. Allow 30 minutes for the Loctite to dry.
Be sure to check the spring return stroke, as stated above, before re-installing the valve body to the tank.



S1599-1102 Service Kit includes . . .

Item Number	Quantity	Description
1	1	Stem
2	1	Spring
3	1	Seal Carrier
4	1	Yoke
5	1	Rubber Seal
6	1	Washer
7	1	Spring Guide
8	1	Stem Guide
9	1	Yoke Seat
10*	1	TL 29005 Loctite®

*not shown