

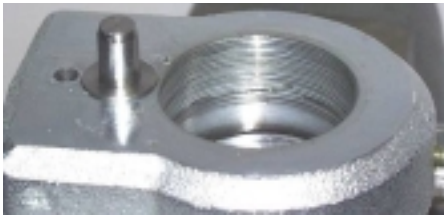
12. Slip the Spring over the opposite end of the Plunger and into the Sleeve.



13. In order to keep the Spring from falling off, hold the Plunger Assembly at an angle and install it into the Male Body.



14. Make sure the top of the Housing is just about flush with the face of the Body. **NOTE: If the Housing is not flush with the face, remove the Plunger Assembly and repeat steps 12 thru 14.**



15. Lightly lubricate the Male Plug threads with a non-petroleum based lubricant.

Lubricate Threads Lightly



16. Install the Male Plug into the Body, **hand-tight only.**



17. Place the Retainer over the threaded hole, secure with the Cap Screw, and tighten with the 5/32" Allen wrench.



18. **Taking care not to damage the Plunger, tighten the Male Plug with a large adjustable wrench.**

19. Tighten the Set Screw on the side of the Body, using the 3/32" Allen wrench.



20. The manufacturer suggests that an air test be performed on the entire assembly prior to returning to service.

21. After testing, refer to Installation, Operation and Maintenance Manual number FVC062 for warnings and re-installation instructions.



## Service Manual for Flo-Max Check Valve Plunger Replacement Kit FM125-0023

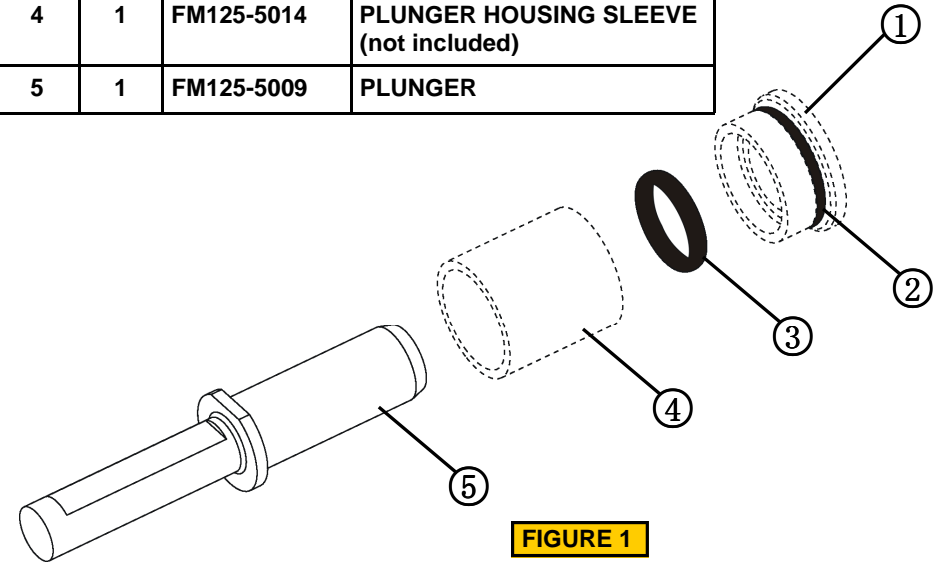
February 2005

Form FVC 065 - Rev 02

**KEEP THIS DOCUMENT WITH THE PRODUCT UNTIL IT REACHES THE END USER.**

Service Kit Number FM125-0023 (See FIGURE 1 for item numbers.)

ITEM	QTY.	PART NO.	DESCRIPTION
1	1	FM125-5013	PLUNGER HOUSING (not included)
2	1	P5-133-R0	O-RING (11mm x 1mm)
3	1	P5-015-R4	O-RING 2-011
4	1	FM125-5014	PLUNGER HOUSING SLEEVE (not included)
5	1	FM125-5009	PLUNGER



**FIGURE 1**

**Tools Needed:** Large Flat Blade Type Screwdriver, 3/32" Allen Wrench, 5/32" Allen Wrench, 18" Adjustable Wrench, Non-Petroleum Based Lubricant

### Manual Disconnect Instructions (Refer to Figures 2 & 3)

- CLOSE THE NURSE TANK WITHDRAWAL VALVE.**
- OPEN THE BLEED VALVE ON THE MALE HALF TO RELIEVE PRESSURE IN THE NURSE TANK HOSE. LEAVE THE BLEED VALVE OPEN.**

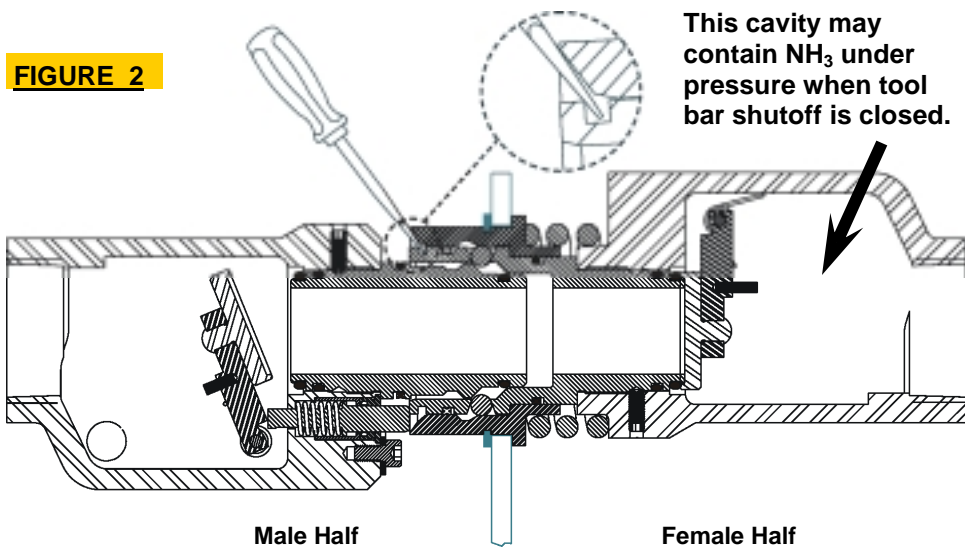
**NOTE:** Pressure may be trapped in the Female Half, but the Coupler may still be disconnected.

**WARNING! WARNING! WARNING! WARNING! WARNING! WARNING!**  
**IF THE FEMALE HALF IS TO BE DISCONNECTED FOR ANY REASON, ALL PRESSURE MUST BE BLED FROM THE TOOLBAR SYSTEM PIPING PRIOR TO DISCONNECTION.**

**WARNING! WARNING! WARNING! WARNING! WARNING!**  
**THE BLEED VALVE MUST BE LEFT OPEN TO PREVENT RESIDUAL LIQUID FROM RE-PRESSURING THE HOSE.**

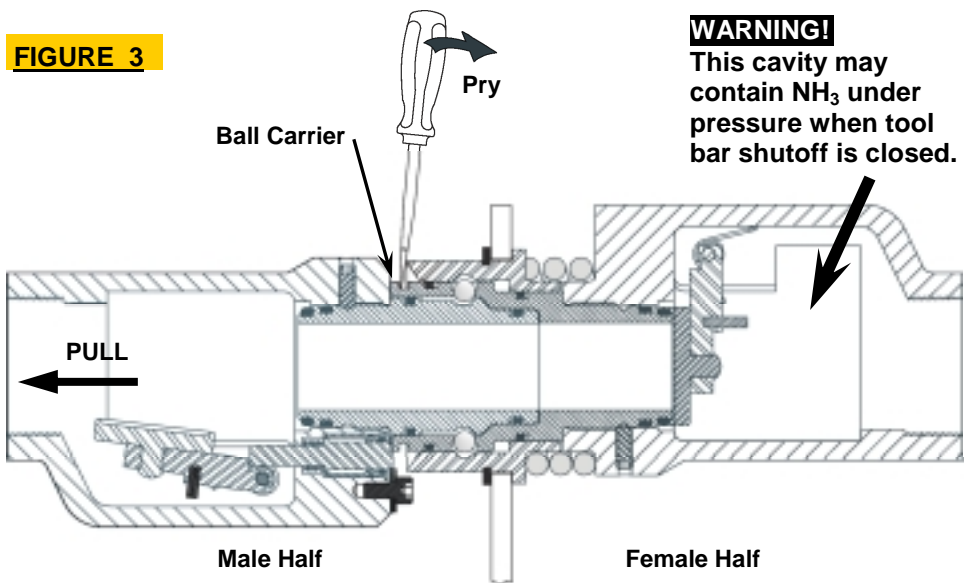
- While pulling the Male Half outward, use a screwdriver at the location shown to unlatch the Coupler and release the Male Half.

**FIGURE 2**

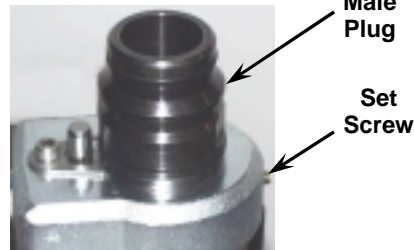


When the Ball Carrier is pried forward, the Latch Balls are released and the Male Half may be separated from the Female Half.

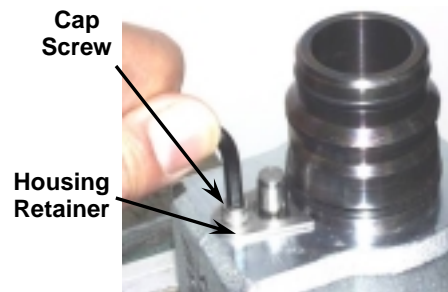
**FIGURE 3**



- Secure the Male Half in a bench vise with the Male Plug facing upward. Using a 3/32" Allen wrench, loosen the Set Screw until its end is about 1/8" out from the body.

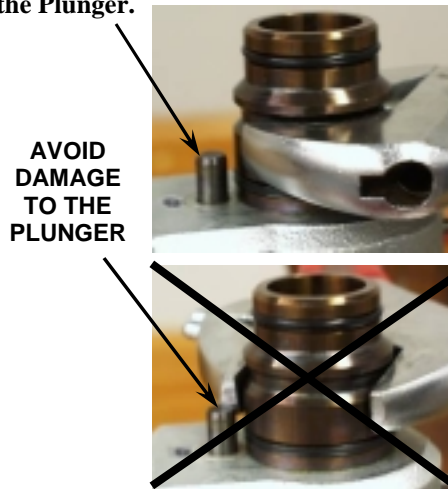


- Using a 5/32" Allen wrench, remove the Cap Screw and Housing Retainer from the Male Body.



- Using a large adjustable wrench, turn the Male Plug counter-clockwise and remove it from the Body.

**NOTE: Use caution to avoid damage to the Plunger.**



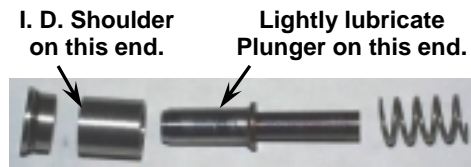
- Remove the Plunger, Housing, and Spring from the Body by pulling upward.



- Disassemble the Plunger/Housing and remove the two O-Rings from the Housing ①. (See Figure 1 for Item Numbers.)



- Install the new O-Rings, lubricate the Plunger lightly with a non-petroleum based lubricant, and align the components as shown below.



- Install the Plunger into the Sleeve.



- Place the Housing over the Plunger and press it against the Sleeve.

