

Y602 Series vent assemblies help to prevent the obstruction of vent openings, allowing proper air or gas flow for regulator spring cases, remote vent lines, actuator diaphragm casings, and miscellaneous applications. These vent assemblies are available in either angle or straight styles (figures 1 and 2, respectively). Typically, angle vent assemblies protect vent openings that face sideways, and straight vent assemblies protect vent openings that face either up or down. Both styles provide protection to vent openings when carefully selected, installed, and oriented so that the opening in the vent assembly faces downward.

- **Bug-Resistant**—All Y602 Series vents except the Type Y602-16 vent have screened vent openings to resist insect entry and resultant clogging. Screened opening is larger than that of other available vents.

- **Stabilizer Helps Prevent Cycling**—Spring-opposed stabilizer in vent outlet of selected Y602 Series vents restricts vent breathing rate, providing stability under normal conditions. Force of rapid discharge opens stabilizer when such discharges occur.

Features

- **Weather-Resistant**—Double-lip moisture deflector of Y602 Series vents resists water bridging across vent opening. Vents resist plugging due to inclement weather such as rain, sleet, and snow.

Ordering Information

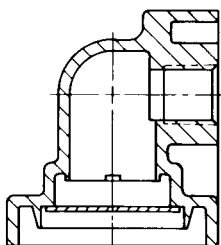
When ordering a Y602 Series vent, specify the type number of the required vent and where the vent is to be used.

Vent Type	End Connection Size and Style, In.	Vent Material†	Stabilizer‡	Bug-Resistant	Weather-Resistant
Y602-5	3/8 female NPT	Valox 311* plastic	No	Yes	Yes
Y602-6	3/8 female NPT	Valox 311 plastic	Yes	Yes	Yes
Y602-7	1/2 female NPT	Valox 311 plastic	No	Yes	Yes
Y602-8	1/2 female NPT	Valox 311 plastic	Yes	Yes	Yes
Y602-9	3/4 female NPT	Valox 311 plastic	No	Yes	Yes
Y602-12	1/4 self-threading	Valox 341* plastic	No	Yes	No
Y602-13	1/4 female NPT	Valox 311 plastic	No	Yes	Yes
Y602-14	1/4 female NPT	Valox 311 plastic	Yes	Yes	Yes

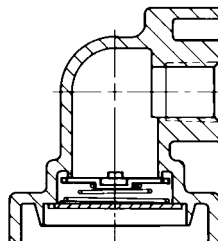
*Trademark of General Electric Co.

†Screen is Monel (Trademark of Huntington Alloys, Inc.) for all but Y602-12 with integral plastic screen.

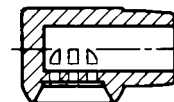
‡Stabilizer spring and flapper are stainless steel.



17A6572-B
TYPICAL OF TYPES Y602-5,
-7, -9, AND -13



17A6573-B
TYPICAL OF TYPES Y602-6,
-8, AND -14



27A5516-C
TYPE Y602-12

Figure 1. Y602 Series Angle Vent Assemblies

Vent Type	End Connection Size and Style, In.	Vent Material†	Stabilizer‡	Bug-Resistant	Weather-Resistant
Y602-1	1/4 male NPT	Delrin 107* plastic	No	Yes	Yes
Y602-2	1/4 male NPT	Delrin 107 plastic	Yes	Yes	Yes
Y602-3	Fitting for 3/8 O.D. tubing	zinc	No	Yes	Yes
Y602-4	Fitting for 3/8 O.D. tubing	zinc	Yes	Yes	Yes
Y602-10	3/4 male NPT	zinc	No	Yes	Yes
Y602-11	1/4 male NPT	Valox 311 plastic	No	Yes	Yes
Y602-15	1/2 female NPT	zinc	No	Yes	Yes
Y602-16	3/4 male NPT	zinc	Yes	No	No
Y602-17	1 female NPT	cast iron	No	Yes	Yes

*Trademark of Du Pont Co.
†Screen is Monel (Trademark of Huntington Alloys, Inc.) for all but Y602-11 with integral plastic screen.
‡Stabilizer spring and flapper are stainless steel.

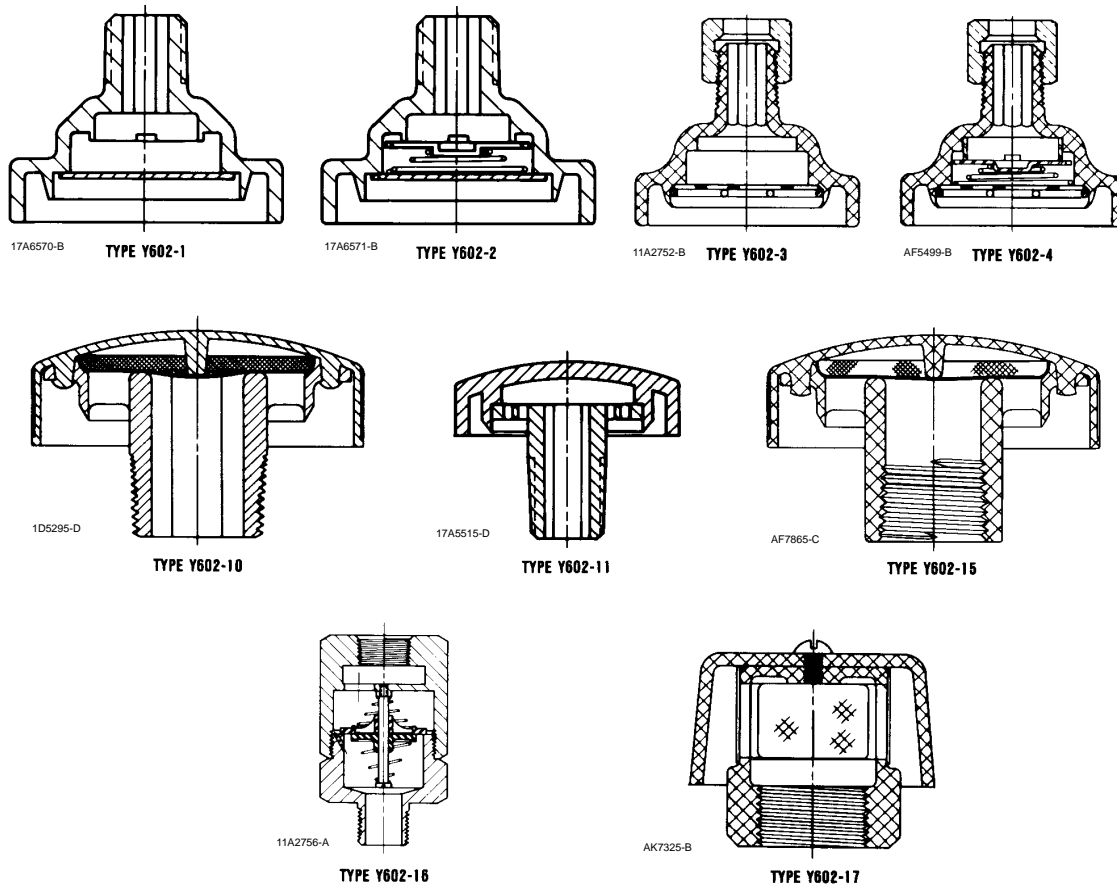


Figure 2. Y602 Series Straight Vent Assemblies

While this information is presented in good faith and believed to be accurate, Fisher Controls does not guarantee satisfactory results from reliance upon such information. *Nothing contained herein is to be construed as a warranty or guarantee, express or implied, regarding the performance, merchantability, fitness*

or any other matter with respect to the products, nor as a recommendation to use any product or process in conflict with any patent. Fisher Controls reserves the right, without notice, to alter or improve the designs or specifications of the products described herein.